

Industry Growth and Worker Injury by Age Groups

Data as of Q4 2022

Report updated July 25, 2023

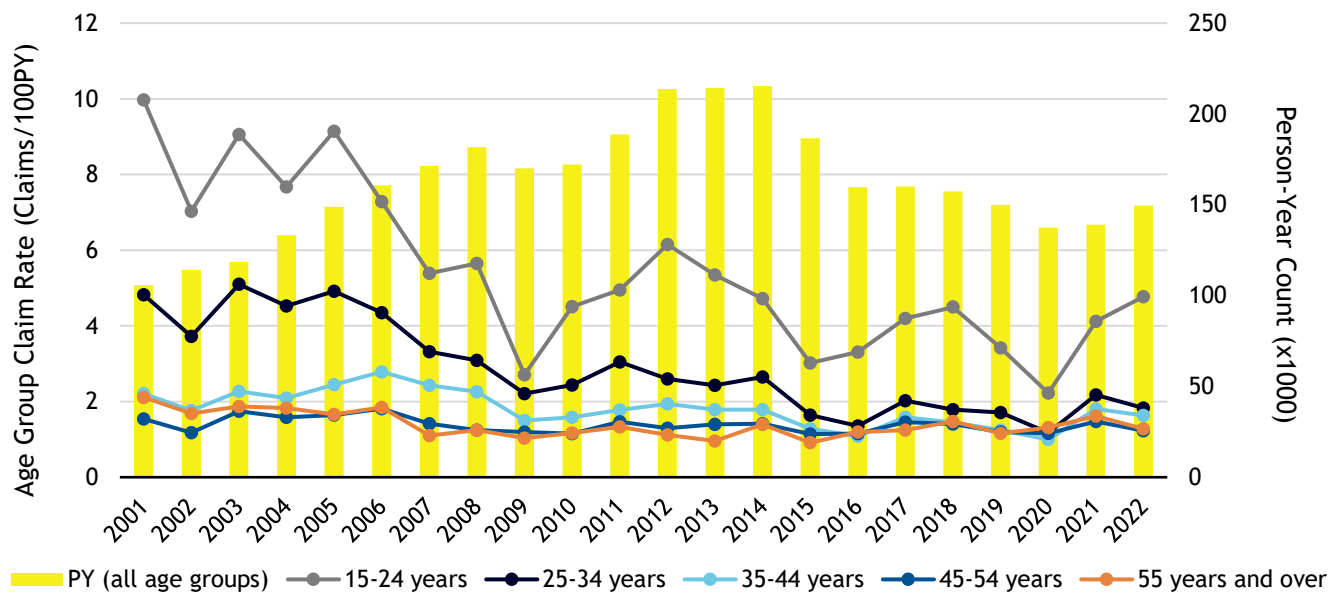
Energy Safety Canada’s analysis of Worker’s Compensation Board of Alberta (WCB Alberta) data and Statistics Canada data shows that changes in the size of industry have a strong correlation with overall claim rate. After the 2008-2009 recession in Canada, Alberta’s upstream oil and gas industry started recovering. There was a 26% increase in industry size (measured in person-years) by 2012, accompanied by a 29% increase in total claim rate.

Since 2015, person-years have remained low mainly due to lower oil prices and the respective industry consolidation. Among the companies who grew during recovery in 2017, however, the injury rate rose 19% on average.

The increase in claim rate in 2021 was largely attributable to COVID-19, rather than an increase in industry activity. In particular, data from WCB Alberta shows employment among 15- to 24-year-olds declined in 2021 and the number of their injury claims increased, causing a significant rise in injury rate.

As industry activity increased in 2022 the proportion of young workers grew compared to other age groups, but their injury rates continued to rise.

ALBERTA CLAIM RATE TREND BY AGE GROUP

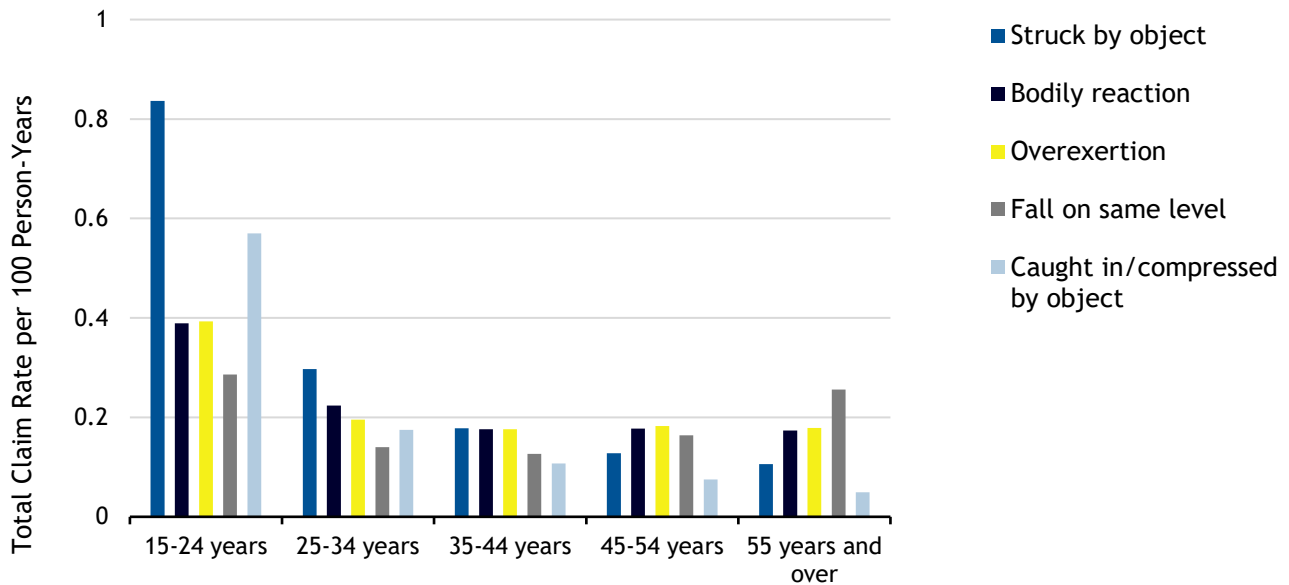


Note: Certain injuries are not reflected in these charts. Injuries caused by exposures over many years (e.g., noise) have been excluded.

The most common causes of injuries varied by age group, with *Struck by object* at the top with younger workers, *Overexertion* with the middle-aged group, and *Fall on the same level* with older workers, within the aforementioned time frame. Injuries, especially *Struck by object* injuries, tend to increase in count and cost during economic growth.

Over the last seven years, *Struck by object*, *Overexertion*, *Bodily reaction* and *Fall on the same level* were the top ranked claims, shifting in rank from year to year.

TOP INJURIES BY AGE GROUP – ALBERTA 2016-2022



Note: Certain injuries are not reflected in these charts. Injuries caused by exposures over many years (e.g., noise) have been excluded.

For information on how to prevent injuries in new and inexperienced workers, please see Energy Safety Canada’s [Safe Start for Greenhands](#) resources.

Data Disclaimer: While every reasonable effort has been made to ensure the accuracy of the data used in this report, data should be read as indicative of scope rather than exact figures. The variable nature of WCB Alberta claims management may be reflected in the data shown.