

2018

# LIFE SAVING RULES

Toolbox Talk  
Safe Mechanical Lifting



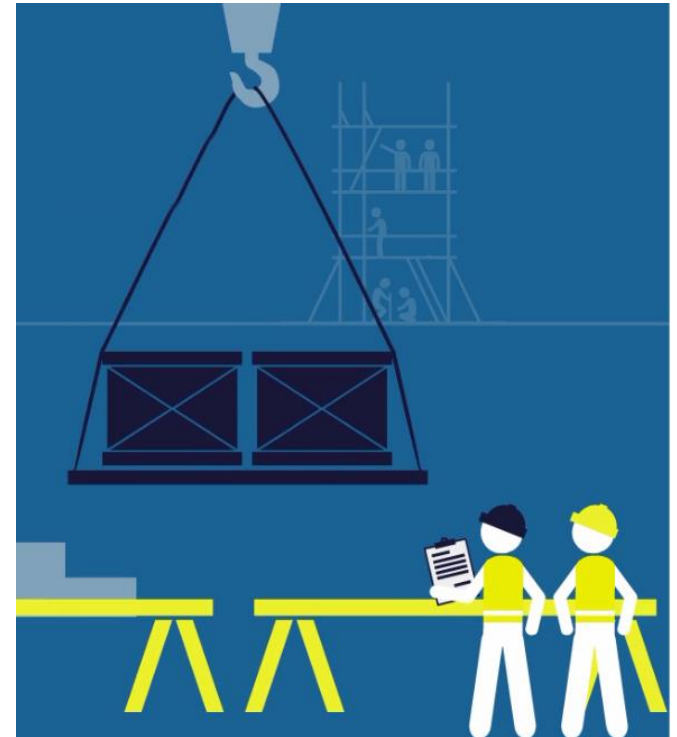
ENERGY  
SAFETY  
CANADA

SETTING THE STANDARD IN OIL AND GAS SAFETY

## OUTLINE

---

- 10 Life Saving Rules
- Description of Safe Mechanical Lifting Rule
- Additional Guidance
- Roles & Responsibilities
- Example Violations
- Related Life Saving Rules
- Summary



# ENERGY SAFETY CANADA'S 10 LIFE SAVING RULES



**CONFINED SPACE**



**WORKING AT HEIGHT**



**WORK AUTHORIZATION**



**ENERGY ISOLATION**



**LINE OF FIRE**



**BYPASSING SAFETY CONTROLS**



**DRIVING**



**HOT WORK**



**SAFE MECHANICAL LIFTING**



**FIT FOR DUTY**

## SAFE MECHANICAL LIFTING RULE

---

- Plan lifting operations and control the area
  - I confirm that the equipment and load have inspected and are fit for purpose
  - I only operate equipment that I am qualified to use
  - I establish and obey barriers and exclusion zones
  - I never walk under a suspended load



## ADDITIONAL GUIDANCE

---

- Safe mechanical lifting applies to **any equipment or loads** that are lifted by mechanical means
- A **suspended load** is an object that is temporarily lifted and hangs above the ground. This applies to equipment and loads that have not been designed for workers to be beneath it during operation.
- A **lift plan** identifies the weights and dimensions, how the lift will progress, communication requirements (signal personnel), and weather and ground conditions.
- **Line of fire** is a significant risk with overhead loads and moving equipment

## AS A SUPERVISOR

---

- I ensure workers are competent to operate the mechanical lift
- I ensure a lift plan is in place and that workers follow the plan
- I ensure barriers and exclusion zones are established, communicated and adhered to by site personnel

## AS A WORKER

---

- I have the required training and knowledge to safely perform work
- I ensure I am fit for duty
- I follow the lift plan
- I inspect the lifting equipment and adhere to all certification requirements

## AS A WORKER - CONTINUED

---

- I confirm the lift equipment is fit for purpose and I operate the lifting equipment below its working load limits
- I ensure line of fire hazards in relation to overhead power lines are identified, marked, and a safe distance is maintained
- I use tag lines to position suspended loads
- I adhere to barriers and exclusion zones



## EXAMPLE VIOLATIONS

---

- The lift operator is not competent to conduct the lift, but does so anyway
- The lift operator is not fit for duty, but conducts the lift anyway
- A lift is conducted without a lift plan
- The lift equipment and load are not inspected prior to the lift
- The lift is conducted with equipment that does not have the proper certifications

## EXAMPLE VIOLATIONS - CONTINUED

---

- A lift is conducted beyond its working load limits
- A safe distance is not maintained from overhead powerlines
- The load is positioned using worker's hands instead of tag lines, putting the workers under the suspended load
- Barriers and exclusion zones are not established

# RELATED LIFE SAVING RULES

---



**WORKING AT  
HEIGHT**



**WORK  
AUTHORIZATION**



**LINE OF  
FIRE**



**DRIVING**



**FIT FOR  
DUTY**

## SUMMARY

---

- Know your role and responsibilities in relation to the Safe Mechanical Lifting rule
- Notify your supervisor immediately if you are unsure about how to comply with this rule in your work environment
- If you see a potential violation of the Safe Mechanical Lifting rule, intervene – it could be the last chance to prevent a fatality
- Consistent application of the Life Saving Rules equates to saved lives
- These rules are essential to achieving industry's shared vision: zero injuries, zero incidents

# QUESTIONS?